

Monitoring Functions

- **Mandonic** auto enveloping system
- **SKPuzzlemaster** expert monitoring programs for special types of errors and forming operations
- New intelligent auto start feature after machine stop
- Analyzes process stability and monitoring quality
- **DMI** Die Match Indicator for thread rollers
- Absolute force measurement
- Trending stop/go chart
- Part data memory (Set-up recall)
- **Mandon®** reporting system

Technical Features

- 7" TFT color touch-screen with high resolution
- EMR-proof, ergonomically designed flat enclosure,
- Numerous mounting options (yoke, swivel, floor pedestal, panel mount)
- Part counters for job size, tool life, Unattended production runs with Eco-Stop and SPC intervals
- Sorting and batching logics
- **SKTelemaster** for teleservice
- networkable for machine data collection

Technical Data

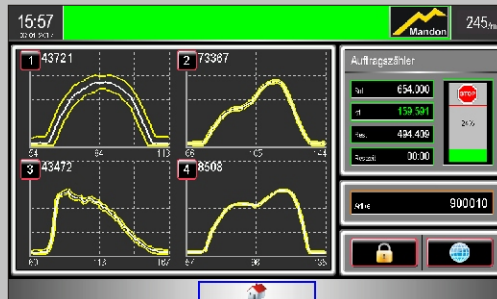
- Powerful digital signal analysis processor
- Up to 16 sensor inputs
- 5 digital outputs (incl. 4 relays)
- 5 digital inputs
- Crank angle decoder option
- Data ports: serial RS-232, Ethernet, USB, Teleservice
- RFID controlled user access
- Data back-up (network or USB)
- High output digital signal amps

Dimensions (without yoke):
230 W x 165 H x 60 D (mm)
Supply: 24 VDC, 30W
Weight: 3,0 kg



Please note that some features are optional features even if not specifically mentioned. Modifications are possible without prior notice.

Highlights



The **Mandonic** auto enveloping system adjusts the envelope limits according to the current variation of the process. The result: reliable detection of process errors with virtually no unnecessary machine stops.

SKPuzzlemaster is provided for quick activation of expert monitoring routines.



Our unique **Mandon®**-system "talks" to the machine operator.

Mandon® is constantly thinking along with the process, gives timely warnings, provides intelligent remedies, and gives precise recommendations on how to improve productivity and quality.

Mandon® is your productivity insurance!



Easy-to-set part counters are available for controlling

- order size
- tool life
- unattended production runs with ECO-Stop
- batching unit
- SPC inspection intervals

All counters show preset quantity and current count. Machine stops when reaching preset counts (if activated).



The **DMI** Die Match Indicator assists operators in aligning thread roll dies quicker, more precisely, and more efficiently, and it extends tool life and improves thread quality.

The **DMI** Die Match Indicator tells the operator exactly in which direction he must move the excentre to correct die match.