

### IMPAX TSS Remote Access

View machine status and access uptime and downtime information remotely, with the new Remote Access ability for IMPAX TSS monitors. With this optional feature, you can view each TSS's screen from any computer on the same network, and take control of the screen if needed. This feature also enables remote software updates and automatic email alerts.

IMPAX TSS-NET provides basic shop-floor status, but with Remote Access, you also get:

#### Remote Viewing

- See the actual screens of the TSS monitor
- See current uptime, downtime, counts, and more
- Connect from any PC: from an office computer across the local network, or from anywhere across the Internet
- Navigate through screens without disturbing operators

#### Remote Control

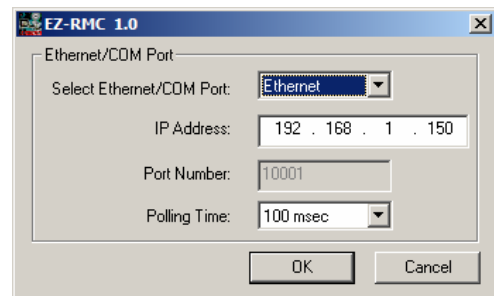
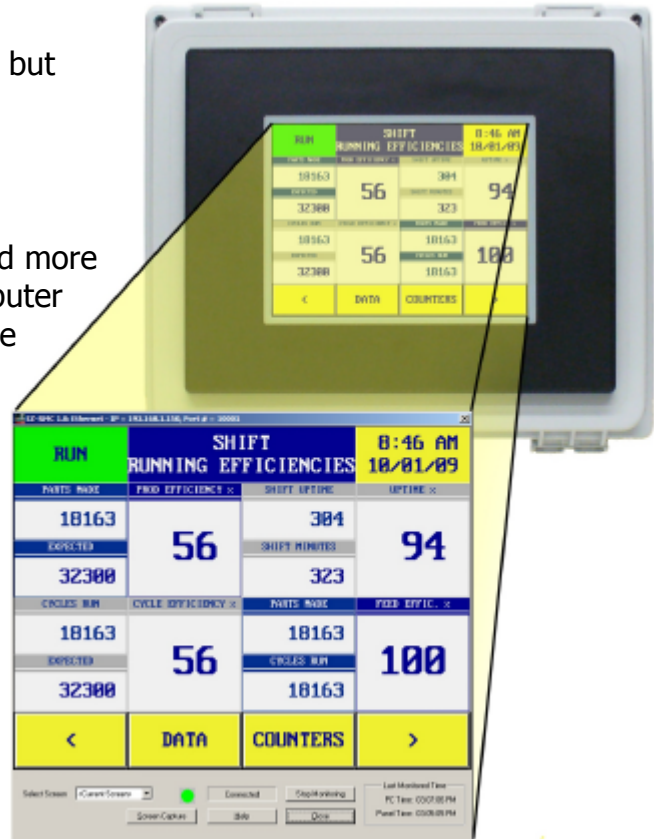
- Interact with the TSS's screen as if you were right in front of the touch panel
- Enter new part numbers, new order count goals, and more
- Protect access to remote control with multiple passworded logins

#### Send Alerts by Email

- Configure alarm conditions which trigger alerts
- Automatically send emails when an alarm triggers
- Email relevant information and messages to up to 8 people at once

#### Remote Update

- Apply software updates to screens remotely
- Update the entire shop in a fraction of the time required to update by hand



Requirements: Remote Access and Email abilities are available in all IMPAX TSS-8 monitors, and are available with optional touch panel network card in some IMPAX TSS-6 monitors. Additional network connections may be needed for touch panel connectivity. To send email, TSS touch panels must be configured with the I.P. address of an accessible open SMTP server.